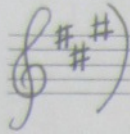


m7 with 9.11. -13

F#m7

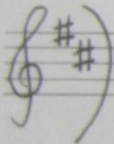


Handwritten musical notation for F#m7 on a single staff. It shows a sequence of notes with fingerings: 1, 3, 5, 7, 9, 11, -13. A double bar line with repeat dots follows. Below the staff are six circled numbers (1-6) corresponding to the fret positions of the notes in the sequence.

Handwritten musical notation for F#m7 on a single staff. It shows a sequence of notes with fingerings: 2, 4, 1, 2, 4, 1, 2, 4, 2, 1, 4, 2, 4, 3, 1, 4, 3, 1, 4, 2, 1, 4, 2, 1, 4, 2, 1, 4, 2, 4, 3, 1.

Handwritten musical notation for F#m7 on a single staff. It shows a sequence of notes with fingerings: 4, 3, 1, 0. A double bar line with repeat dots follows.

Bm7



Handwritten musical notation for Bm7 on a single staff. It shows a sequence of notes with fingerings: 1, 3, 5, 7, 9, 11, -13. A double bar line with repeat dots follows. Below the staff are six circled numbers (1-6) corresponding to the fret positions of the notes in the sequence.

Handwritten musical notation for Bm7 on a single staff. It shows a sequence of notes with fingerings: 2, 4, 1, 2, 1, 4, 2, 1, 4, 2, 4, 2, 1, 4, 2, 1, 3, 1, 4, 2, 1, 3, 1, 4, 3, 1, 4, 3, 1, 4, 2, 1, 0, 1.

Handwritten musical notation for Bm7 on a single staff. It shows a sequence of notes with fingerings: 2, 4. A double bar line with repeat dots follows.